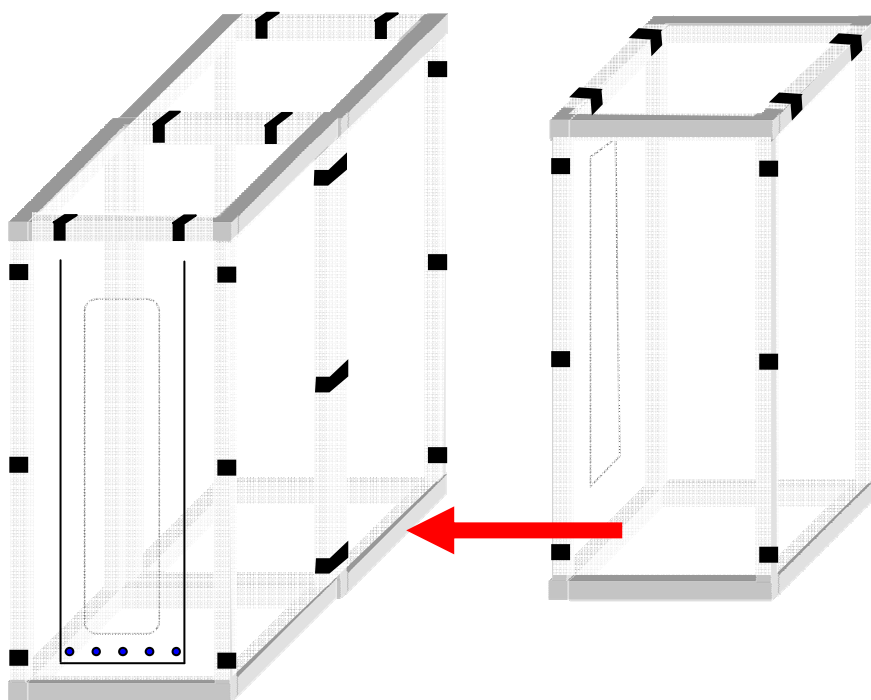


The following instructions apply to the 100cm, 74cm and 60cm Dogleg SpeedDock airlocks*. You will need:

- ◆ 1 x 2-chamber SpeedDock® fully assembled except for the entry flap
- ◆ 1 x 1-chamber SpeedDock® fully assembled except for the entry flap
- ◆ 4 x large SpeedClips®
- ◆ Duck tape and knife

1. Assemble double and single SpeedDock units as per the instructions supplied and position them as shown in figure 1.



**The HSE regulations require the use, wherever possible, of 100cm by 2m airlocks*

Figure 1 – Double and single chamber SpeedDocks

2. Cut off the exit flap from the single chamber SpeedDock and discard.
 3. Connect the two SpeedDocks together using 2 double clips at the top and 2 at the bottom.
- See figure 2

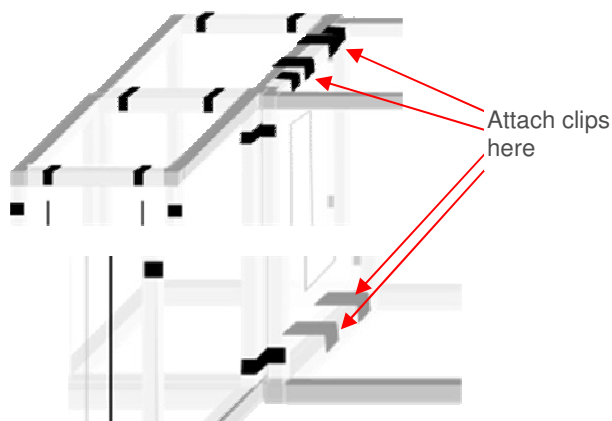


Figure 2 – Joining the Double and single chambers together

4. Enter the double chamber SpeedDock and where the single chamber unit attaches, cut an entrance hole 2cm larger (all around) than the exit hole from the single chamber. Tape the edge of this entrance hole to the single chamber all around to seal together.
5. Take the loose flap supplied with the double chamber SpeedDock and attach it above the newly cut entrance.
6. Cut the main entrance in the single chamber section and hang the flap following the instructions supplied.
7. Where required, attach an air control/night flap to the outside of the entrance. CSD can supply these flaps ready to hang.
8. Use appropriate tape to seal the “dirty” end of the tent to the working area using the attached flange, in accordance with current HSE requirements.
- 9. Thoroughly inspect the SpeedDock® unit before first use and then daily to ensure no damage is present that could affect its proper functioning.**

SpeedDock®

CSD Systems Limited
Pantiles Chambers
85 High Street
Tunbridge Wells
Kent TN1 1XP
UK

T: +44 (0) 1892 614 366 F: +44 (0) 1892 535 475
www.speeddock.com info@cspdsystems.co.uk

Call us on 0800 083 0637 or visit
www.speeddock.com
for details of our full product range
and special offers